

ENGAGEMENT DOCUMENT: LISHMAN UNIT

Improving Inpatient Mental Health Services

Public engagement on proposals to improve adult inpatient
(hospital) mental health services at the Lishman Unit.

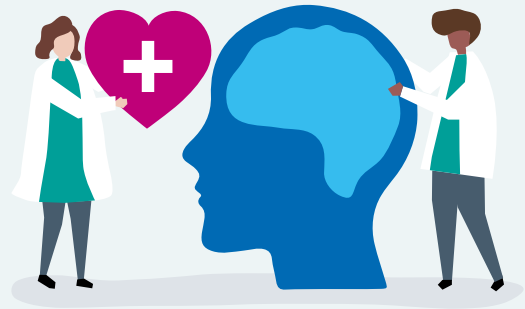
Engagement runs from 4 May 2020 – 14 June 2020



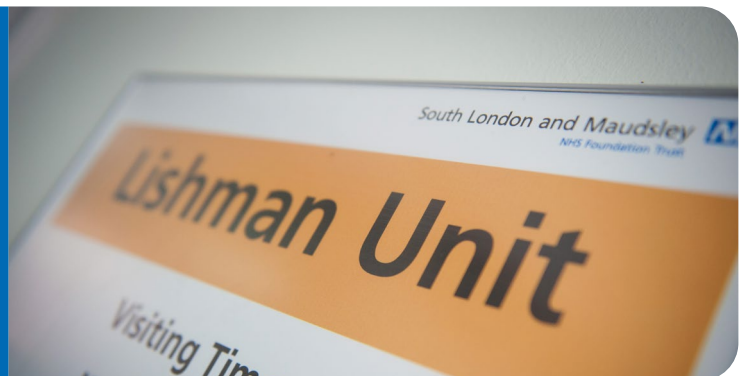
There is a hospital in Bromley called Bethlem Royal Hospital.



This hospital is for adults who are mentally unwell.



In that hospital there is a ward called the Lishman Unit.



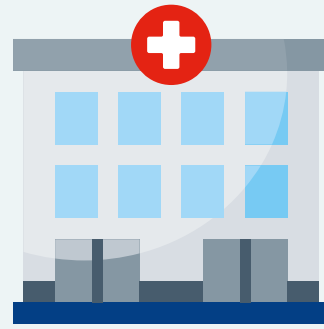
People can stay there if they need help. There are 15 beds.



The buildings are old and the bedrooms are small.



We want to build a new building to stay in.



We have a place for a new building. This is at the Maudsley Hospital, in Southwark.



We want the new building to be a nice place to stay, with lots of space and a courtyard with trees and flowerbeds.



We will be able to add 3 more beds in the new building, so 18 people can stay there.



Tell us what you think.



Is it a good idea to move the Lishman Unit to the new building?



Tick a face.



Thank you for telling us.

