

ENGAGEMENT DOCUMENT: EATING DISORDERS UNIT

Improving Inpatient Mental Health Services

Public engagement on proposals to improve adult inpatient
(hospital) mental health services at the Eating Disorders Unit

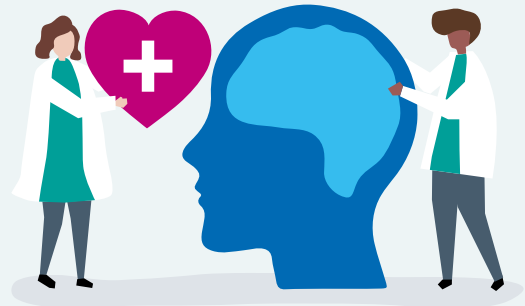
Engagement runs from 4 May 2020 – 14 June 2020



**There is a hospital
in Bromley called
Bethlem Royal
Hospital.**



**This hospital is for
adults who are
mentally unwell.**



**In that hospital there
is a ward called the
Eating Disorders Unit.**



**People can stay there
if they need help.
There are 18 beds.**



**The buildings are old
and the bedrooms
are small.**



**We want to build a
new building to stay in.**



**We have a place for a
new building. This is at
the Maudsley Hospital,
in Southwark.**



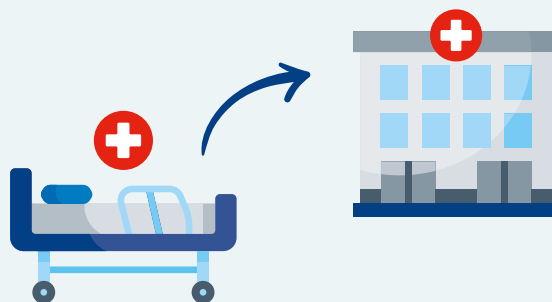
**We want the new
building to be a nice
place to stay, with
lots of space and
a roof garden.**



Tell us what you think.



Is it a good plan to move 18 beds to the new building?



Tick a face.



Thank you for telling us.

